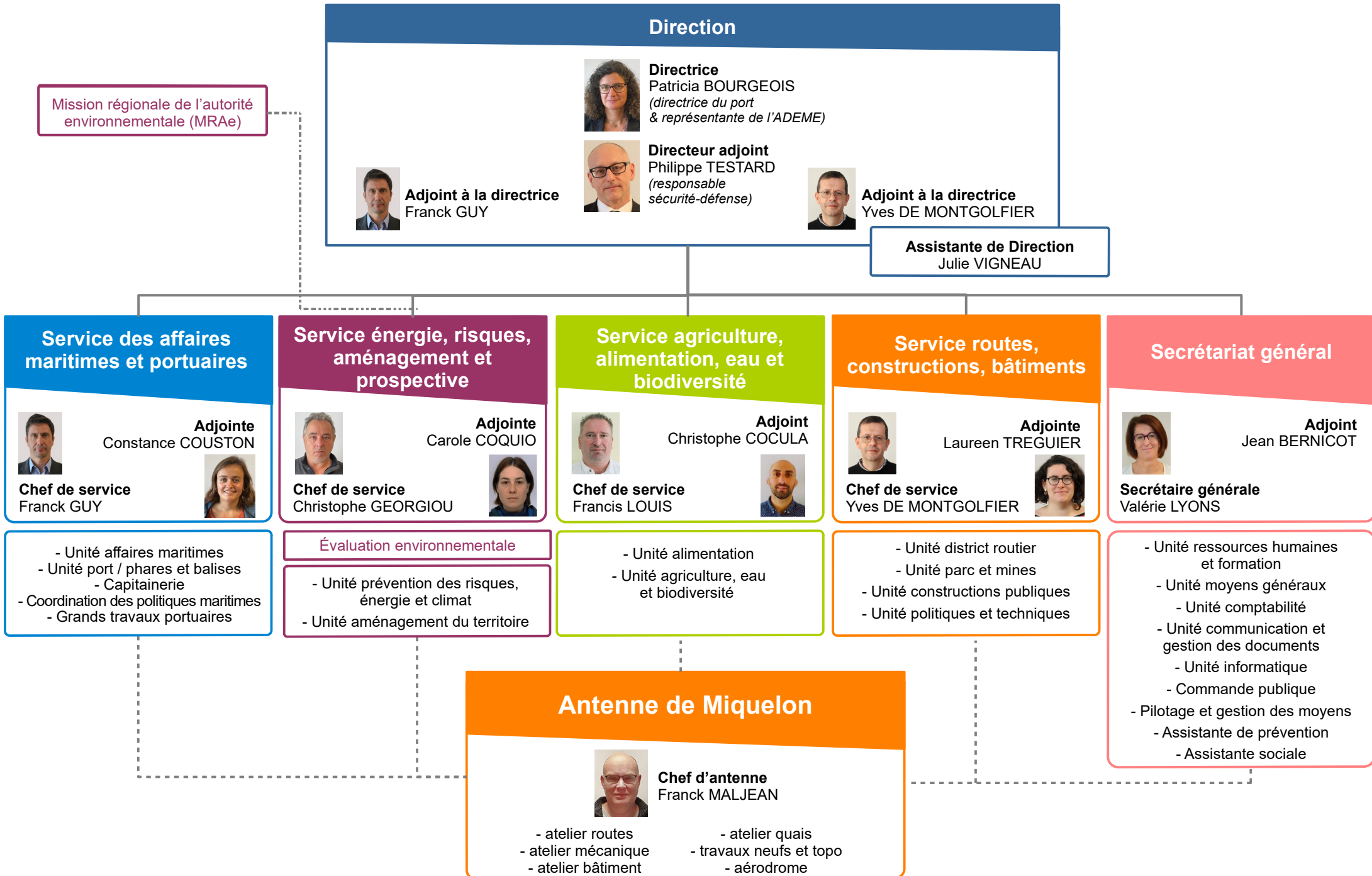


# Direction des territoires, de l'alimentation et de la mer

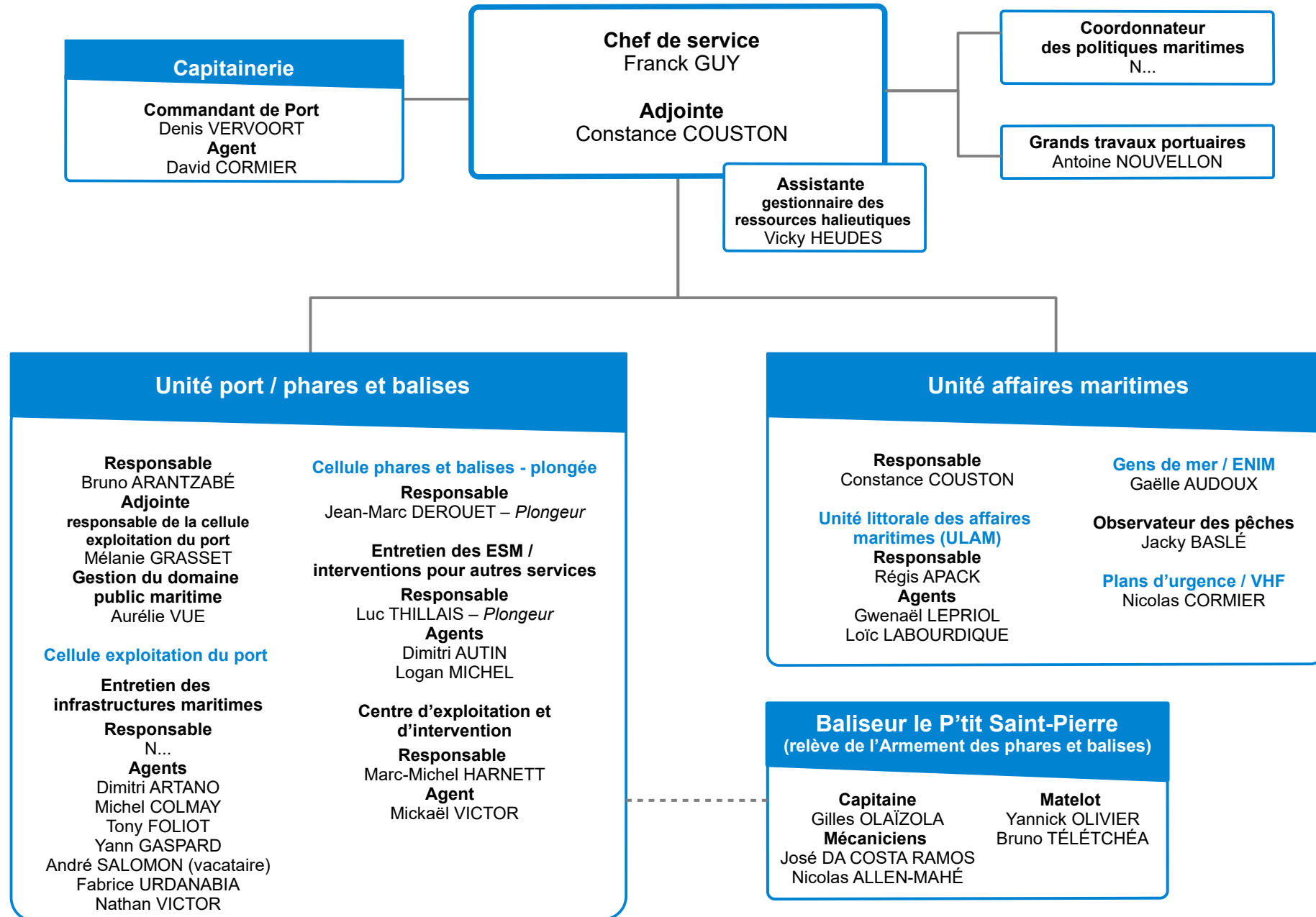
## Organigramme nominatif

*au 1<sup>er</sup> février 2024*

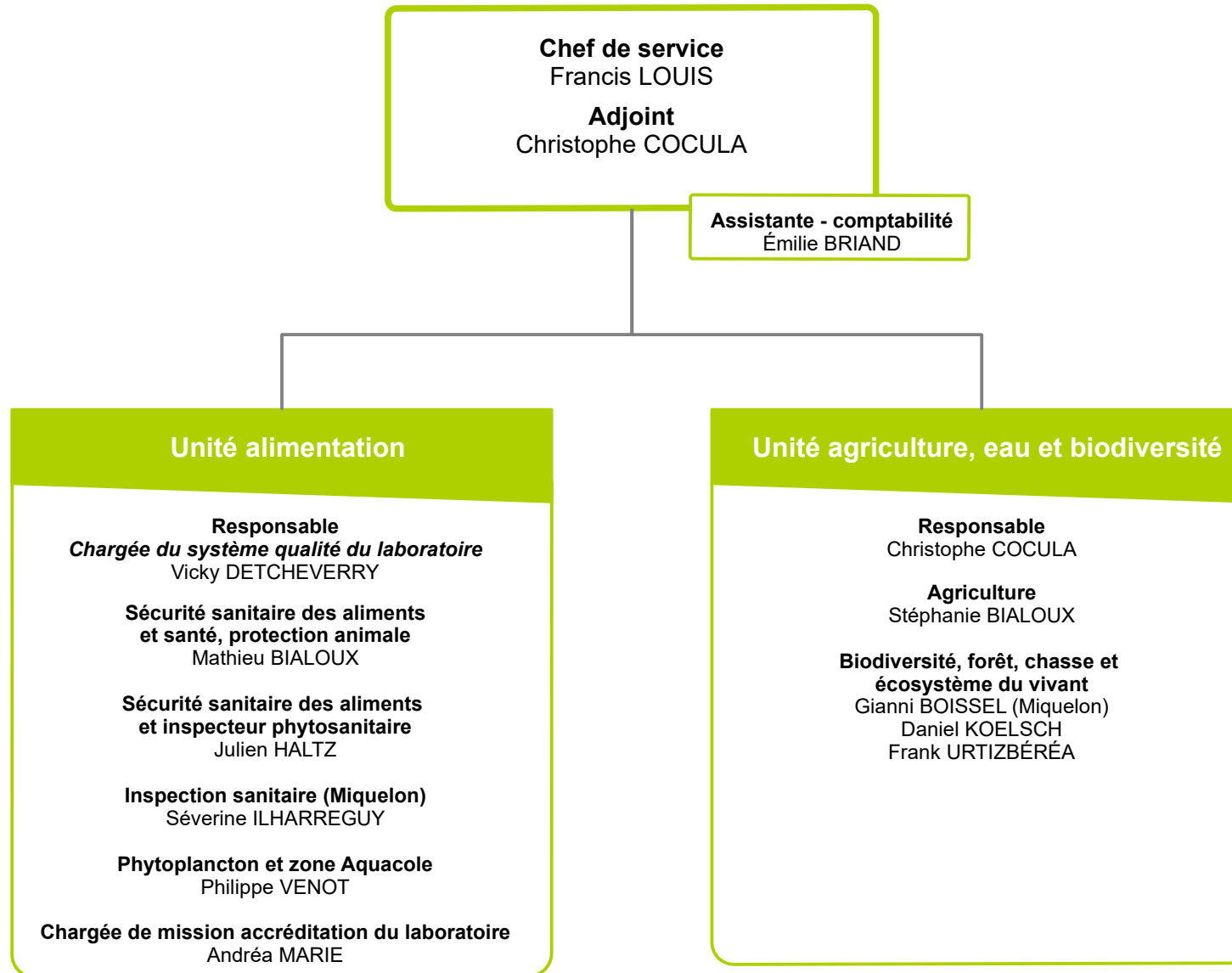
# Organigramme général



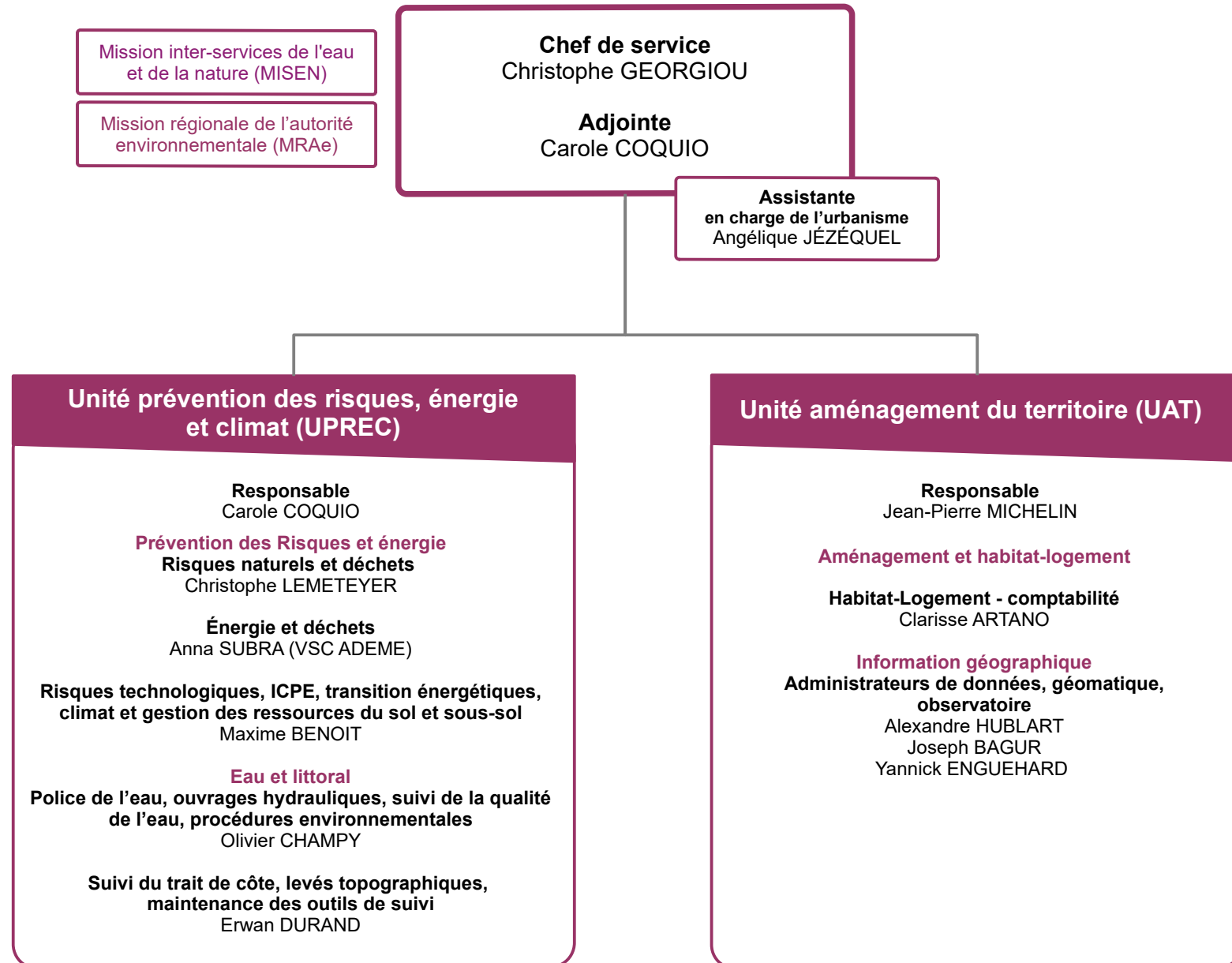
# Service des affaires maritimes et portuaires (SAMP)



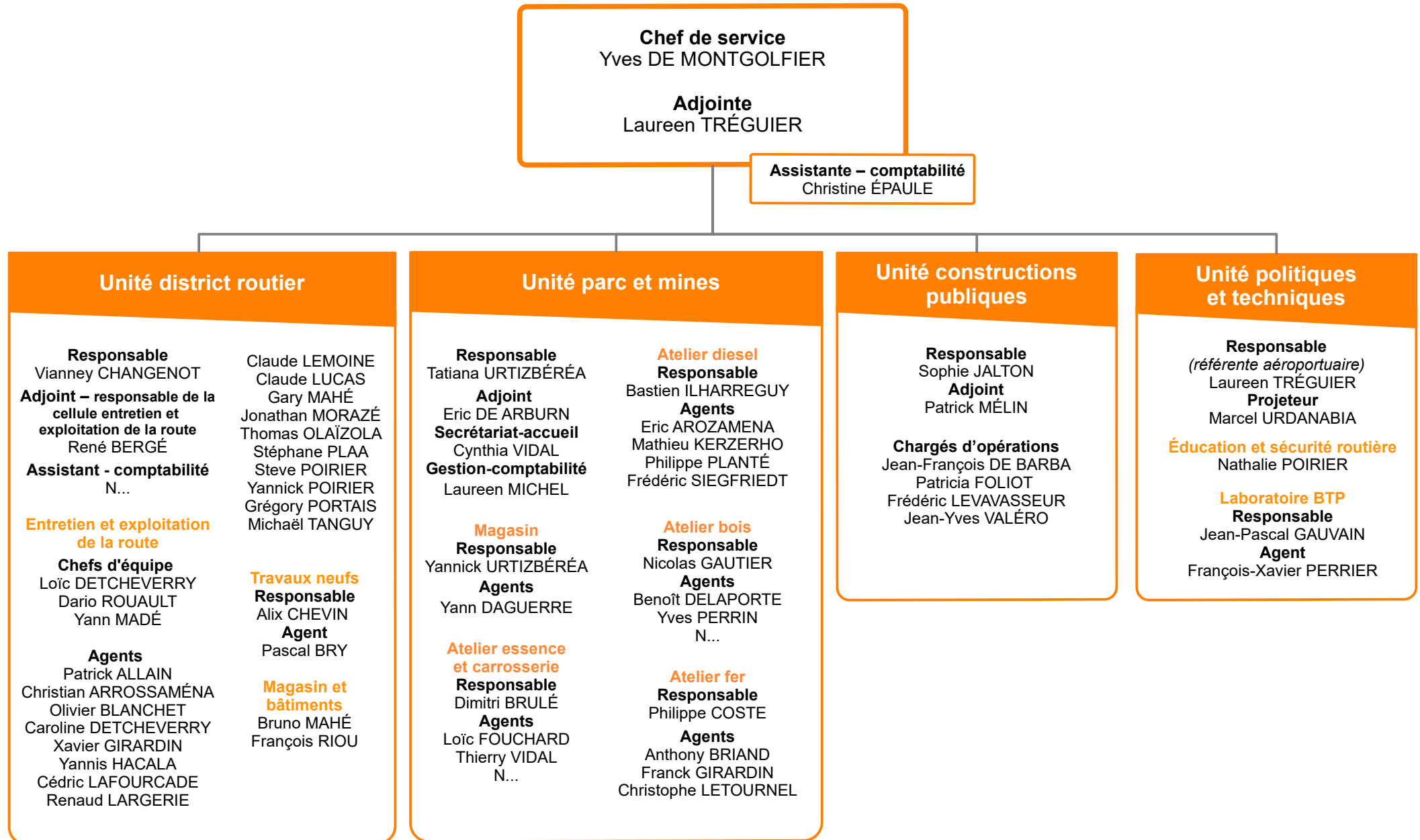
# Service agriculture, alimentation, eau et biodiversité (SAAEB)



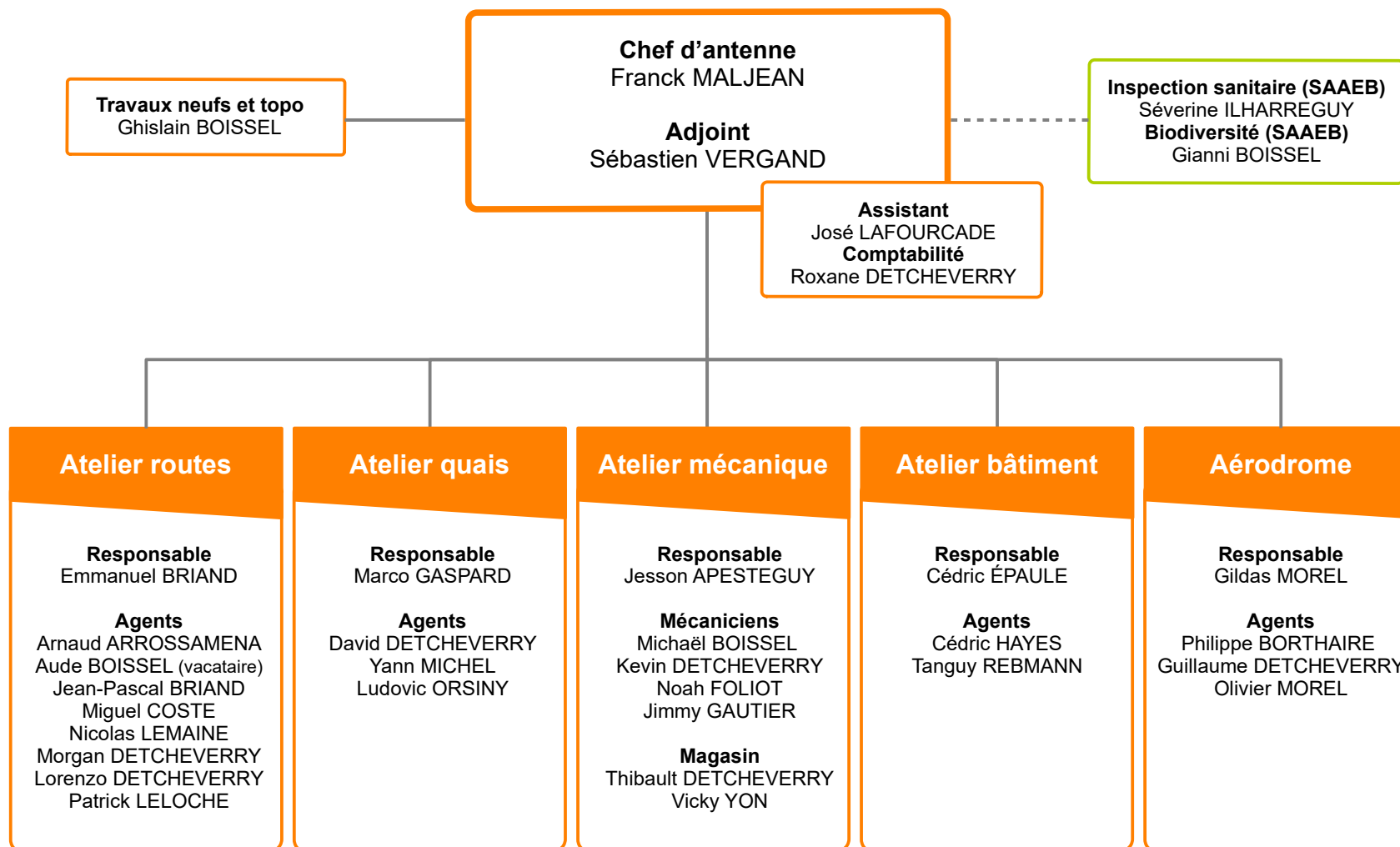
# Service énergie, risques, aménagement et prospective (SERAP)



# Service routes, constructions, bâtiments (SRCB)



# Antenne de Miquelon



# Secrétariat général (SG)

